



# 2023 New Member Orientation

---



# WELCOME



Dear New ACHE of Massachusetts Member,

Thank you for joining your local chapter of ACHE! We are one of the largest chapters in the country with over 800 Massachusetts members. This membership packet is designed to help you learn more about our national organization and your local chapter.

At ACHE MA our mission is to provide healthcare leaders an opportunity for professional growth and personal development through educational programs and professional collegiality while promoting high ethical standards and conduct. ACHE MA provides high quality education programs throughout the year, and networking events. Each spring and fall we host half-day conferences featuring nationally known keynote speakers and panelists, and we organize quarterly programs like *Breakfast with Healthcare Champions*, and other types of social and educational programs with distinguished local executives. Our conferences offer education credits each year towards Fellow certification/re-certification.

Our dynamic Early Careerist Network (ECN) provides emerging healthcare leaders with educational, professional development, and networking opportunities, and provides a great way to volunteer with chapter activities. ECN organizes a variety of events in collaboration with the chapter board and facilitates our mentorship program.

In addition to our chapter events, there are many ways to volunteer with the chapter to maximize your membership experience. Chapter committees offer an opportunity to lend your insight to various aspects of how the chapter functions and a chance to get to know other colleagues. We also offer ad hoc volunteer opportunities that are posted on our website when they become available. We strive to make our chapter accessible through use of technology, meeting the needs of careerists at all levels and geographic locations in MA and, of course, by listening to our membership.

We look forward to you attending our events and getting involved. Welcome to ***“The Premier Association in New England for Healthcare Executives”***.

Ali Raja, FACHE  
Chapter President, ACHE of Massachusetts



# ACHE of Massachusetts



One of the benefits to joining ACHE is YOU are AUTOMATICALLY a local chapter member. **WELCOME TO ACHE of MASSACHUSETTS!**

**ACHE of Massachusetts** is a professional association providing executive-level managers of healthcare institutions with opportunities for professional collegiality and continuing education. ACHE of Massachusetts is an independent chapter of the [American College of Healthcare Executives](#) and is "the premier association in New England for healthcare executives."

Founded in 1968 by 29 hospital administrators, ACHE of Massachusetts now represents a variety of health service organizations throughout New England. Membership at the national level includes membership in the chapter with no additional membership dues.

**President**

**President-Elect**

**Immediate Past President**

**Treasurer**

**Secretary**

**Ali Raja, FACHE**

**Jack Bailey, FACHE**

**Maureen Banks, FACHE**

**Michelle Davis, FACHE**

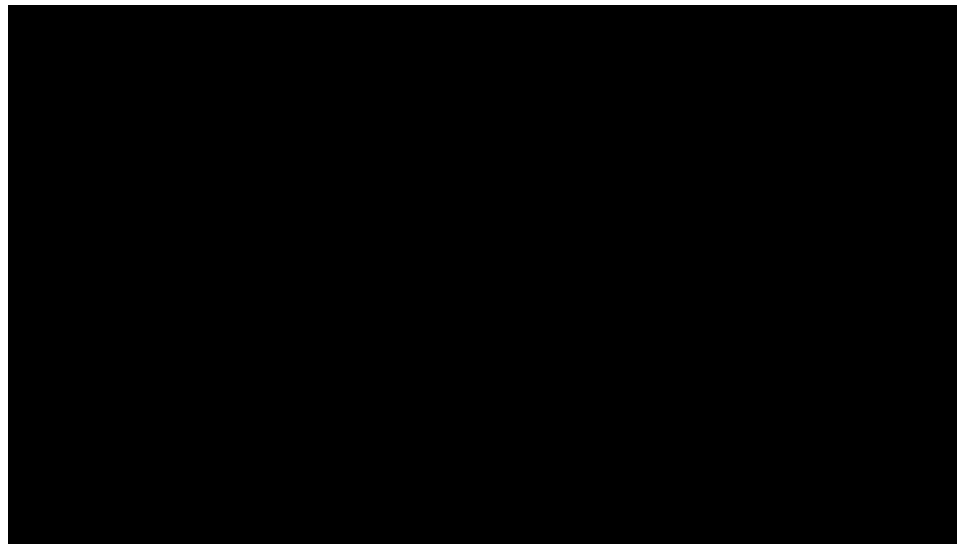
**Julie Havsy Weissman, FACHE**



# ACHE: Our Story



We are committed to leading with intent, integrity and vision



<https://youtu.be/6Wsx4nASPDw>



# American College of Healthcare Executives



The **American College of Healthcare Executives** (ACHE) is an international professional society of 48,000 healthcare executives who lead hospitals, healthcare systems and other healthcare organizations.

***Chairman***

Anthony Armada, FACHE

***Chairman-Elect***

Delvecchio S. Finlay, FACHE

***Immediate Past-Chairman***

Carrie Owen Plietz, FACHE

***President and***

***Chief Executive Officer***

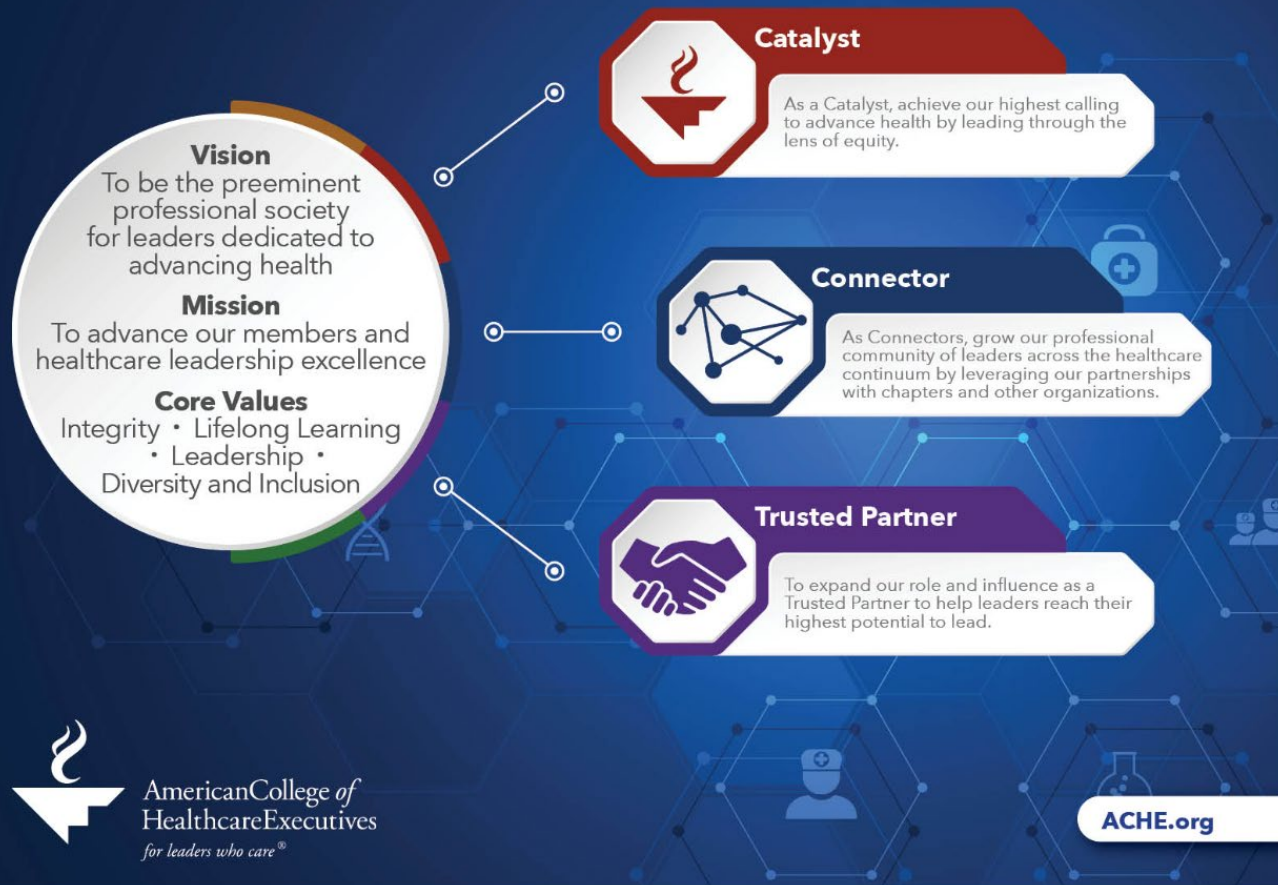
Deborah J. Bowen, FACHE

*"Caring is at the core of what we do. Ensuring the delivery of safe, high quality care. Expanding opportunities for diverse executives in healthcare. Developing physician leaders. Enhancing the value of the FACHE credential. And increasing collaboration and strategic alliances."*

*- Deborah J. Bowen, FACHE, CAE , ACHE*

# ACHE: STRATEGIC GOALS

## ACHE's 2022-2024 Strategic Plan



[Use this link for the Strategic Plan Map and Progress Report:  
2023-24 Strategic Plan](#)



# ACHE: CORE VALUES

## **Core Values**

As members of the American College of Healthcare Executives, we are committed to:

### **Integrity**

We advocate and emulate high ethical conduct in all we do.

### **Lifelong Learning**

We recognize lifelong learning is essential to our ability to innovate and continually improve ourselves, our organizations and our profession.

### **Leadership**

We lead through example and mentoring, and recognize caring must be a cornerstone of our professional interactions.

### **Diversity**

We advocate inclusion and embrace the differences of those with whom we work and the communities we serve.



# GOVERNANCE

ACHE is governed by a Board of Governors that serves the usual function of a board of directors. The Board of Governance appoints the President and Chief Executive Officer of ACHE who leads the staff organization and serves as a non-voting member of the board. The Board of Governors sets the strategic direction of ACHE through the strategic plan, annual budget and organization-wide performance objectives.

The governors and the chairman-elect are elected by the Council of Regents, most of who are directly elected by Members, Fellows, and Life Fellows.

For more detailed information on the Governance of ACHE

[Current ACHE Bylaws](#)





# MEMBER BENEFITS



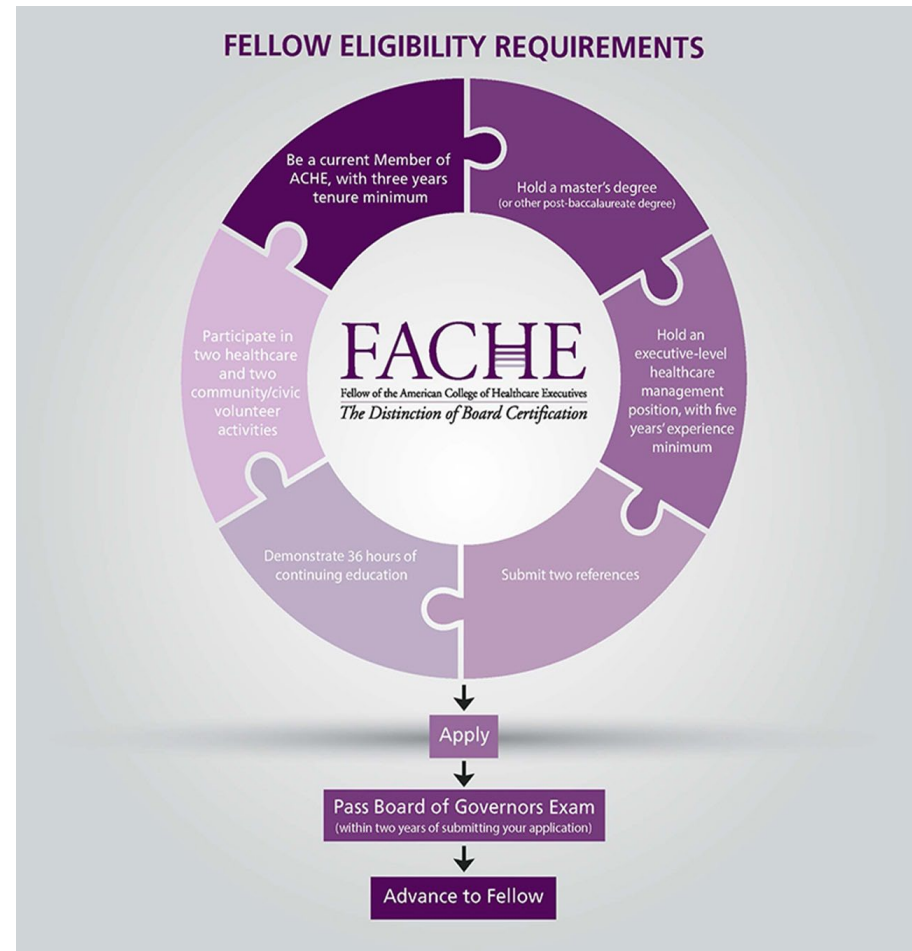
## MEMBER BENEFITS

As a member of ACHE you have access at your fingertips to a plethora of educational resources, contact information of over 48,000 colleagues, one of the best job banks in the industry.

- Earn the distinction of board certification by earning your [FACHE credential](#)
- Receive complimentary subscriptions to ACHE's top-notch publications, including [Healthcare Executive](#) magazine AND your choice of either the [Journal of Healthcare Management](#) or [Frontiers of Health Services Management](#)
- Meet other ACHE members through ACHE events and using the online [Member Directory](#)
- Unlock access to exclusive, members-only content, such as the [CareerEDGE®](#) career planning and management tool
- Exclusive career resources such as ACHE's online [Job Center](#)
- Earn **rewards** through ACHE's [Leader-to-Leader](#) program for encouraging new Members to join or existing Members to earn the FACHE credential. *This program does not apply to recruitment of Student Associates*
- **Reduced fees** for ACHE's [continuing education programs](#)
- Cutting-edge [research studies](#)
- Automatic **savings on books** published by [Health Administration Press](#)
- A comprehensive **Web site** that includes member-only services and online education

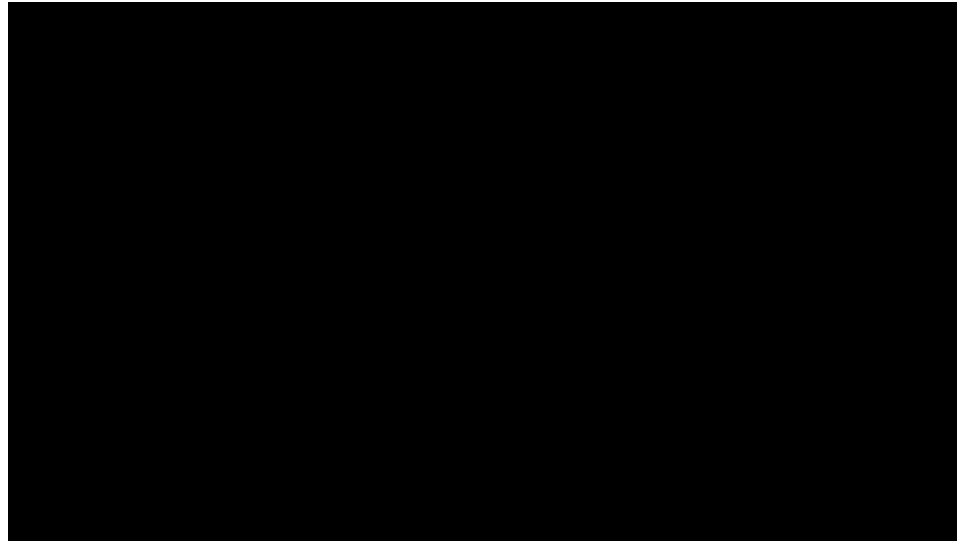
# Fellowship Advancement

- Earn the distinction of board certification by earning your **FACHE credential**
- Stand out among your peers, within your organization and across your community as an exceptional leader
- Elevates your professional status
- Provide recognition of your mastery of critical competencies
- Enables you to participate among a peer group of influential leaders who work with intention to elevate excellence in your profession.
- Numerous resources available to you to exercise your leadership skills, connect with other Fellows, become more involved in your community or expand your career opportunities.





# Fellowship Advancement





# ACHE: FACTS



## FAST FACTS:

- 47,000+ Members
- 78 [Chapters](#) nationwide plus international representation
- 70 [Regents](#)
- 7 International Healthcare Executive Groups
- 6 Women's Healthcare Executive Networks
- 283 Higher Education Network Participants
- Several [publications](#) from books, journals, newsletters and magazines

## EXPLORE MORE ABOUT ACHE:

[http://www.ache.org/abt\\_ache/facts.cfm](http://www.ache.org/abt_ache/facts.cfm)

## PARTNERS IN DIVERISTY:

- Asian Healthcare Leaders Forum
- Institute for Diversity and Health Equity
- LGBT Forum
- National Association of Health Services Executives
- National Forum of Latino Healthcare Executives
- The Thomas C. Dolan Executive Diversity Program
- The Institute-ACHE Summer Enrichment Program Strategic Alliance

## FOR MORE DIVERSITY RESOURCES:

[Diversity and Inclusion Resources](#)



# American College of Healthcare Executives

## Massachusetts Regent

**Monique Porter, FACHE**

Administrative Director of Oncology Services  
at Massachusetts General Cancer Center  
At Newton Wellesley Hospital  
mporter@partners.org

**Regional District 1 Consists of:** Canada, Connecticut, Delaware, Massachusetts, Maine, New Hampshire, New Jersey, New York, Pennsylvania, Rhode Island, Vermont.

For more a list of the rest of the Regents in District 1, visit  
[District One Regents](#)



# GET INVOLVED



Members are highly encouraged to participate in any of our ACHE of MA standing committees

## **DIVERSITY AND INCLUSION COMMITTEE**

The Diversity and Inclusion Committee works to foster an inclusive environment that recognizes the contributions and supports the advancement of all. The committee works to ensure this is reflected in various chapter activities and initiatives.

Chair: Carla Villacorta

## **EARLY CAREERISTS COMMITTEE**

The Early Careerist Network provides emerging healthcare leaders with educational, professional development, and networking opportunities that will position them to navigate an increasingly complex and dynamic healthcare system.

Chair: Kerri-Lynne Kellam

## **SPONSORSHIP COMMITTEE**

The Sponsorship Committee is responsible for maintaining relationships with our current sponsors and reaching out to potential sponsors.

Chair: Chris McFayden

## **COMMUNICATIONS COMMITTEE**

The Communications Committee oversees multiple vehicles to engage our members including e-newsletters, social media and the website.

Chair: Julie Havsy Weissman

## **MEMBERSHIP AND ADVANCEMENT COMMITTEE**

The Membership and Advancement Committee's mission is to grow membership across generations and healthcare settings and support the member experience.

Chair: David Reisman

## **PROGRAMS COMMITTEE**

The Programs Committee is responsible for providing the Chapter membership with leadership, networking and education opportunities that are relevant and timely.

Chair: Jack Bailey

For additional information on the MA ACHE Chapter Board and Committees, please use the links below:

[Mission](#)

[Volunteer Opportunities](#)



# WHY ACHE OF MA?



**Great Networking Opportunities:** ACHE of MA recognizes the importance of creating the opportunity to meet colleagues with similar professional responsibilities. Our events attract 75-200 attendees. Our activities encourage networking and informal discussion of professional topics with your colleagues in healthcare.

**Education:** We provide high quality education programs throughout the year. We hold a minimum of two half-day conferences every year, plus other educational programming like a breakfast series featuring some of healthcare's most distinguished and influential leaders. We also have a panel series on topics that help with your professional development and social events to meet up with other healthcare professionals. Our panel series and conferences award continuing education credits including ACHE Face-to-Face credits.

**FACHE Credential:** ACHE's FACHE credential signifies board certification in healthcare management. It is a significant personal achievement and demonstrates verification for your professional ability and commitment to staying current in the field of healthcare and leadership.

**Early Careerist Network:** The ACHE of MA's Early Careerist Network provides emerging healthcare leaders with educational, professional development, and networking opportunities that position them to navigate an increasingly complex and dynamic healthcare environment. This network primarily serves Massachusetts healthcare professionals under the age of 40 by organizing professional development and networking events, sponsoring community service activities and coordinating our annual mentorship program.

**Mentorship/Mentee Program:** The Mentorship Program pairs senior executives with students, recent graduates, and experienced early careerists. For young professionals, this program represents an opportunity to enhance knowledge of the industry from leaders in the field while gaining support and directions along your path to healthcare leadership. For senior executives, the program provides an innovative opportunity to "give back" to the profession and support the development of future leaders.

**Membership:** If you have a minimum of a bachelor's degree and a commitment to the profession of healthcare management, then you are invited to join ACHE as a member. Annual dues are \$160 per year for the first two years, \$265 in years three through five and \$345 after five years.

**Student Associate:** If you are enrolled in a health services administration or related administrative program, you may be eligible for a discount on your dues. Find answers to your most pressing career questions—and gain a competitive edge—through ACHE's countless resources. Annual dues are \$75.



# HOW TO CONNECT TO THE ACHE OF MA COMMUNITY?

- A. Introduce yourself to members of the Massachusetts chapter; Use the ACHE directory to search for people in your organization.
- B. Reach out to the Chapter leadership team or our state Regent and ask them about their roles.
- C. Participate in chapter educational and networking events; come early and stay late for the best networking!
- D. Volunteer to serve on a chapter committee to get involved and have your voice heard!
- E. Pursue Fellow status in the college and use your new network to find a study buddy or subject matter experts to help you study.

*We look forward to meeting you!!*





# STAY CONNECTED



Questions? Visit the ACHE of Massachusetts Web Page  
[www.massache.org](http://www.massache.org)

or contact

Kirsten Singleton, Chapter Administrator: [info@massache.org](mailto:info@massache.org)

or

Membership & Advancement Committee Chair  
David Resiman, [dreisman@partners.org](mailto:dreisman@partners.org)

Join our Group on [LinkedIn](#) and Follow us on Twitter [@ACHEofMA](#)

ACHE of Massachusetts  
867 Boylston Street, Suite 500  
[Boston, MA 02116 - info@massache.org](#)